



J/70 European Championship

September 10 – September 17, 2022

COYCH, Hyères, France



SAILING INSTRUCTIONS

The Organizing Authority (OA) is the COYCH and the International J/70 Class Association (IJ70CA).

Event Website: www.coych.org

See SI 24 for full contact information

The notation [DP] in a rule of these Sailing Instructions (SIs) means that the penalty for a breach of that rule may, at the discretion of the jury, be less than disqualification. See SI 12.7 and 12.8 for details. This changes RRS 64.2. The notation [NP] in a rule of the Sailing Instructions means that a boat may not protest another boat for breaking that rule. This changes RRS 60.1(a).

1. CHANGES TO SAILING INSTRUCTIONS

Any change to the SIs will be posted before 0900 on the day it will take effect, except that any change to the schedule of races will be posted by 2000 on the day before it will take effect.

2. COMMUNICATION

- 2.1 Notices to competitors will be posted on the Official Notice Board located on the COYCH webpage (www.coych.org). Notices will also be posted on the official "J/70 Europeans" WhatsApp group (**Attachment E** contains the QR code to join that group for one person for each boat).
- 2.2 Any questions regarding the SIs shall be submitted in writing to the Race Committee (RC). The questions and any answers will be posted as in SI 2.1.
- 2.3 On the water, the RC intends to monitor and communicate with competitors on VHF radio channel 72 ('the VHF Channel'). Failure of the RC to broadcast, mistaken broadcasts, or failure of a competitor to receive this information will not be grounds for a request for redress. This changes RRS 60.1(b).
- 2.4 Except as provided in SI 2.5, a boat shall not make voice or data transmissions while racing and shall not receive voice or data communication that is not available to all boats. [DP]
- 2.5 Boats shall use the radio to report retirement from racing and may use the radio to request or provide assistance in an emergency. [NP] [DP]

3. SIGNALS MADE ASHORE

- 3.1 Signals made ashore will be displayed on the flagpole located at Base Nautique.
- 3.2 When flag AP is displayed ashore, "1 minute" is replaced with "not less than forty-five (45) minutes" in The Racing Rules of Sailing (RRS) Race Signal AP.

4. SCHEDULE AND FORMAT OF RACES

4.1 Race Schedule

Day	Races Planned	First Warning Signal
Monday, September 12	1 or more practices race(s)	1400
Tuesday, September 13	2 races	1230

Wednesday, September 14	2 or 3 races	1100
Thursday, September 15	2 or 3 races	1100
Friday, September 16	2 or 3 races	1100
Saturday, September 17	2 races	1100 (no warning signal after 1530)

- 4.2 Up to thirteen (13) races are scheduled with two (2) or three (3) races per day on Tuesday through Saturday, September 13 - 17. A maximum of three (3) races may be sailed in one day. The RC, at its discretion, may run fewer total races.
- 4.3 On Saturday, September 17, no warning signal will be made after 1530 local time. In the case of one or more general recall(s) when the initial warning signal was made prior to 1530, the RC may display subsequent warning signals after that time. This exception will not apply for a race that is postponed or abandoned.
- 4.4 All boats shall sail as one fleet.

5. CLASS FLAG

The class flag is a blue J/70 logo on a white background.

6. RACING AREA

Attachment A shows the location of the racing area.

7. MARKS

- 7.1 Marks 1, 1a (offset), 4s /4p (gate), are red cylinders.
- 7.2 New marks, as provided in SI 10, are green cylinders.
- 7.3 Starting marks are RC vessels.
- 7.4 Finish marks are RC vessels.

8. COURSES

- 8.1 The course to be sailed will be a windward-leeward format. The diagrams in **Attachment B** show the course, including the order in which marks are to be passed, and the side on which each mark is to be left.
- 8.2 No later than the warning signal for each race, the RC signal vessel will use placards to identify the approximate magnetic bearing and distance to the first weather mark.

9. THE START

- 9.1 The starting line will consist of three RC vessels.
- 9.2 Three-Vessel Starting Line:
 - (a) The starting line consists of two line segments:
 - (i) one is between staffs displaying orange flags on the mid-line RC signal vessel and the port-end RC line vessel;
 - (ii) the other is between staffs displaying orange flags on the mid-line RC signal vessel and the starboard-end RC line vessel.
 - (b) Sound and visual signals will be made only by the mid-line RC signal vessel.
- 9.3 To alert boats that a race will begin soon, orange starting line flags will be displayed with one long sound signal on the RC signal vessel marking the line for a minimum of 5 minutes before the warning signal is displayed.
- 9.4 General Recall flags will be displayed on the RC signal vessel in accordance with RRS 29 and may be displayed by other starting line boats as a courtesy. This changes RRS 29.2.
- 9.5 Boats breaking RRS 30.3 (*U Flag Rule*) or RRS 30.4 (*Black Flag Rule*) will be broadcast on the VHF Channel using bow numbers as a courtesy.

- 9.6 In the event of a General Recall or abandonment after the start during a RRS 30.4 (*Black Flag Rule*) start, the RC shall broadcast on the VHF Channel and display the bow number of any boat violating RRS 30.4 before the next warning signal. This changes RRS 30.4.
- 9.7 The RC will attempt to make the broadcasts described in SI 9.5 and 9.6. However, the timing of such a broadcast, the sequence of the broadcasts or the failure to make or hear the broadcasts shall not be grounds for granting redress. This changes RRS 62.1(a).
- 9.8 A boat that does not start within five (5) minutes after her starting signal will be scored Did Not Start (DNS) without a hearing. This change is added to RRS A5.1.

10. CHANGING THE NEXT LEG OF THE COURSE

To change the next leg of the course, the RC will lay a new mark (or move the finishing line) and remove the original mark as soon as practicable. When in a subsequent change a new mark is replaced, it will be replaced with the original mark.

11. THE FINISH

The finish line is between signal boat and the port side finishing boat, displaying each blue flags.

12. PENALTY SYSTEM

- 12.1 The first sentence of RRS 44.1 is changed to "A boat may take a One-Turn Penalty when she may have broken one or more rules of Part 2 while racing, except that when she may have broken a rule of Part 2 while in the zone around a mark other than a starting mark, her penalty shall be a Two-Turns Penalty."
- 12.2 Penalties incurred while in the zone of the windward mark or on the offset leg shall be delayed and taken at the first reasonable opportunity on the downwind leg. This change is added to RRS 44.2.
- 12.3 RRS Appendix P (Special Procedures for Rule 42) is replaced as stated in full in **Attachment C**.
- 12.4 Jury vessels may be positioned anywhere on the course area. Their position at any time will not be grounds for a request for redress. This changes RRS 60.1(b).
- 12.5 A boat that has taken a penalty under RRS 31 or RRS 44.1 shall submit a completed penalty acceptance form at the jury desk within the protest time limit.
- 12.6 RRS Appendix T (Arbitration) applies.
- 12.7 The IJ may impose discretionary penalties other than disqualification, for violations of RRS non-Part 2 rules. This section 12.7 does not apply to breaches of RRS 2, 28 or 31.
- 12.8 The IJ may impose discretionary penalties, other than disqualification, for violations of Class Rules, including the International J/70 Class Rules (J70CR) and the J/70 Equipment Regulations (J70ER). However, in no case shall the penalty for such a violation be less than a ten percent (10%) scoring penalty calculated pursuant to RRS 44.3(c). This changes RRS 64.6.

13. TIME LIMITS AND TARGET TIMES

- 13.1 The race time limit for each race is 100 minutes. The target time for each race is 70-80 minutes. Failure to meet the target time will not be grounds for a request for redress. This changes RRS 60.1(b).
- 13.2 Boats failing to finish within 20 minutes after the first boat sails the course and finishes within the race time limit will be scored Time Limit Expired (HTP) without a hearing, unless they subsequently retire, are penalized or are given redress. The score for HTP is the number of finishers plus two points, but no worse than the score for DNF. This changes RRS 35 and is added to RRS A4 and A5.
- 13.3 The RC will lower the finish line flags with one sound to indicate that the time limit has expired.

14. HEARING REQUESTS

- 14.1 The jury desk will be located at the lobby of Espace Nautique. The hearing room will be located at Base Nautique 1st floor.
- 14.2 The protest time limit each day is sixty (60) minutes after the last finished boat. This time will be posted on the Official Notice Board and at the jury desk within fifteen (15) minutes after the RC signal vessel docks.

- 14.3 The second sentence of RRS 62.2 is replaced with: "If the request is based on an incident in the racing area, it shall be filed within the protest time limit for that day."
- 14.4 A notice of boats scored per RRS A5.1 and SI Addendum C each day will be posted on the Official Notice Board and at the jury desk no later than fifteen (15) minutes after the RC signal vessel docks on that day. The deadline for a request for redress based on these scores is the protest time limit for that day. This changes RRS 62.2.
- 14.5 The time limit for a request for redress based on the outcome of a scoring inquiry (see SI 15.4) is 30 minutes after that outcome has been posted. This changes RRS 62.2.
- 14.6 The Categorization Protest Time Limit (see World Sailing Regulation 22.5.1) is the protest time limit for the first racing day.
- 14.7 Hearing request forms are available at the jury desk or on the regatta website.
- 14.8 Penalty acceptance forms are available at the jury desk or on the regatta website.
- 14.9 Notices will be posted no later than fifteen (15) minutes after the protest time limit each day on the Official Notice Board and at the jury desk to inform competitors of hearings in which they are parties or named as witnesses. Hearings will be heard as soon as possible.
- 14.10 On the last day of the event, a request for reopening a hearing shall be delivered within the protest time limit if the requesting party was informed of the decision on the previous day or no later than 30 minutes after the requesting party was informed of the decision on that day. This changes RRS 66.2.
- 14.11 On the last day of the event, a request for redress based on a jury decision shall be delivered no later than 30 minutes after the decision was posted. This changes RRS 62.2.

15. SCORING

- 15.1 Scoring for the Championship Series shall be according to the Low Point Scoring System of RRS A2 and A4 as follows:
 - (a) When fewer than five (5) races have been completed, a boat's series score shall be the total of her race scores;
 - (b) When five (5) or more races have been completed, a boat's series score shall be the total of her race scores excluding her worst score.
- 15.2 Five (5) races are required to constitute a championship.
- 15.3 Preliminary results will be posted on the event website as soon as possible after racing each day.
- 15.4 Competitors shall notify the RC of any scoring inquiry by filing a Scoring Inquiry Form available at the jury desk. The deadline to file a scoring inquiry is the protest time limit or thirty (30) minutes after the preliminary results have been posted for that day, whichever is later.

16. SAFETY REGULATIONS [DP]

- 16.1 Prior to the warning signal of her first race each day, each boat shall check-in with the RC signal vessel in the starting area. Each boat shall pass close astern on starboard tack and hail her bow number. When a boat has been recognized, the RC will hail the boat's bow number.
- 16.2 A boat that retires from a race or leaves the racing area between races shall notify the RC as soon as possible using the VHF Channel as provided in SI 2.3 and SI 2.5.
- 16.3 A boat not leaving the harbor for any of the day's racing shall inform the RC as soon as possible.
- 16.4 The penalty for breaking a rule in SI 16 shall be a twenty percent (20%) scoring penalty calculated pursuant to RRS 44.3(c) unless the Jury decides differently, applied without a hearing to a boat's first valid race of the day. This change is added to RRS A5.1.
- 16.5 RRS 40.1 applies at all times while racing. All competitors are required to wear a life jacket or other adequate personal flotation device (PFD) while racing.

17. BOW NUMBERS [NP]

- 17.1 Bow numbers will be supplied and applied by the OA in accordance with the J70ER 6 and J70ER Appendix A as shown in **Attachment D**.

- 17.2 Bow numbers shall be displayed from the time they are applied by the OA through the end of the event. It is the responsibility of the competitor to ensure that the bow numbers remain on the boat and obtain replacements as necessary.

18. REPLACEMENT OF CREW OR EQUIPMENT [DP]

- 18.1 Substitution of competitors is not allowed without written approval of the event Technical Committee prior to racing on that day.
- 18.2 Repair, alteration, replacement, or substitution of damaged or lost equipment will not be allowed unless authorized before racing by the event Technical Committee pursuant to J70ER 10.
- 18.3 Boats requesting approvals under SI 18.1 or SI 18.2 shall contact the event Technical Committee for instructions:
- (a) If off the water: by phone, text message, or WhatsApp at +49 163 877 5400;
 - (b) If on the water: hailing on the VHF Channel (see SI 2.3).

19. EQUIPMENT AND MEASUREMENT CHECKS [DP]

Pursuant to J70ER 4, a boat, sails or equipment may be inspected at any time for compliance with the Event Equipment Rules (see J70ER 2), IJ70CA Class Rules (J70CR), and SIs. On the water, when instructed by a member of the RC or event Technical Committee, a boat shall proceed immediately to a designated area for inspection.

20. EVENT ADVERTISING [NP] [DP]

- 20.1 Boats shall display any event advertising supplied by the OA, in accordance with World Sailing Regulation 20. If this rule is broken, World Sailing Regulation 20.9.2 applies.
- 20.2 Any required sponsor or event identification stickers, decals and flags shall be placed on the bow or boom, in the cockpit or on a shroud or stay as directed by the OA. They shall be displayed from the close of check-in through the end of the event. If required to be placed on the bow, they shall be placed immediately aft of the bow numbers. It is the responsibility of the competitor to ensure that the stickers remain on the boat and obtain replacements as necessary.

21. OFFICIAL VESSELS [NP]

Official vessels are marked as follows:

Category	Flag
RC Vessels	White flag with black letter "A"
Jury Vessels	Yellow flag, with dark blue JURY
Technical Committee	White flag with black "M"
Press Vessels	Red flag with white PRESS
Coach and Support Vessels	TBA

- 21.1 Only registered Support Person Vessels (SPVs), including coach, press, private and spectator vessels that prominently display identification provided by the OA are allowed in the racing area (see SI 6). The person in charge of the competing boat(s) to which support vessels are attached shall acknowledge the presence of a support vessel on his check-in form and may pay the applicable fee on behalf of the support vessel.
- 21.2 All SPVs shall carry a working VHF radio capable of transmitting and receiving normal domestic and international channels, including the VHF Channel.
- 21.3 SPVs, and team leaders, coaches, and other support personnel, shall stay more than 150 meters to leeward of the starting line, leeward marks, and from any competing boats that are racing.
- 21.4 SPVs shall comply with any additional directions given by the OA, the RC or the Jury, including requests for assistance with rescues. Failure to comply may result in the accreditation being withdrawn and all access to the club facilities, grounds and docks being denied.
- 21.5 SPVs shall be kept in the places, both afloat and ashore, that they specify during check-in.
- 21.6 Operators of SPVs and all competitors are reminded that J70CR I.3 (Outside Assistance) is in effect.

21.7 Operators of SPVs shall wear a kill cord at all time when afloat.

21.8 Operators of SPVs must wear a life jacket when wind exceed 10 knots.

22. TRASH DISPOSAL [DP]

Trash shall be placed in the appropriate containers when the boats return to shore.

23. RISK STATEMENT

Competitors participate in the event entirely at their own risk. See RRS 3, Decision to Race. By participating in the event, each competitor agrees to release the race organizers (organizing authority, host yacht club, race committee, protest committee, sponsors, and any others acting in an official capacity for the event) from any and all liability associated with such competitor's participation in the event to the fullest extent permitted by law.

24. RACE OFFICIALS

Host Club Contact: COYCH, Espace Nautique,
14 avenue du Dr Robin, 83400 HYERES, FRANCE
contact@coych.org | www.coych.org

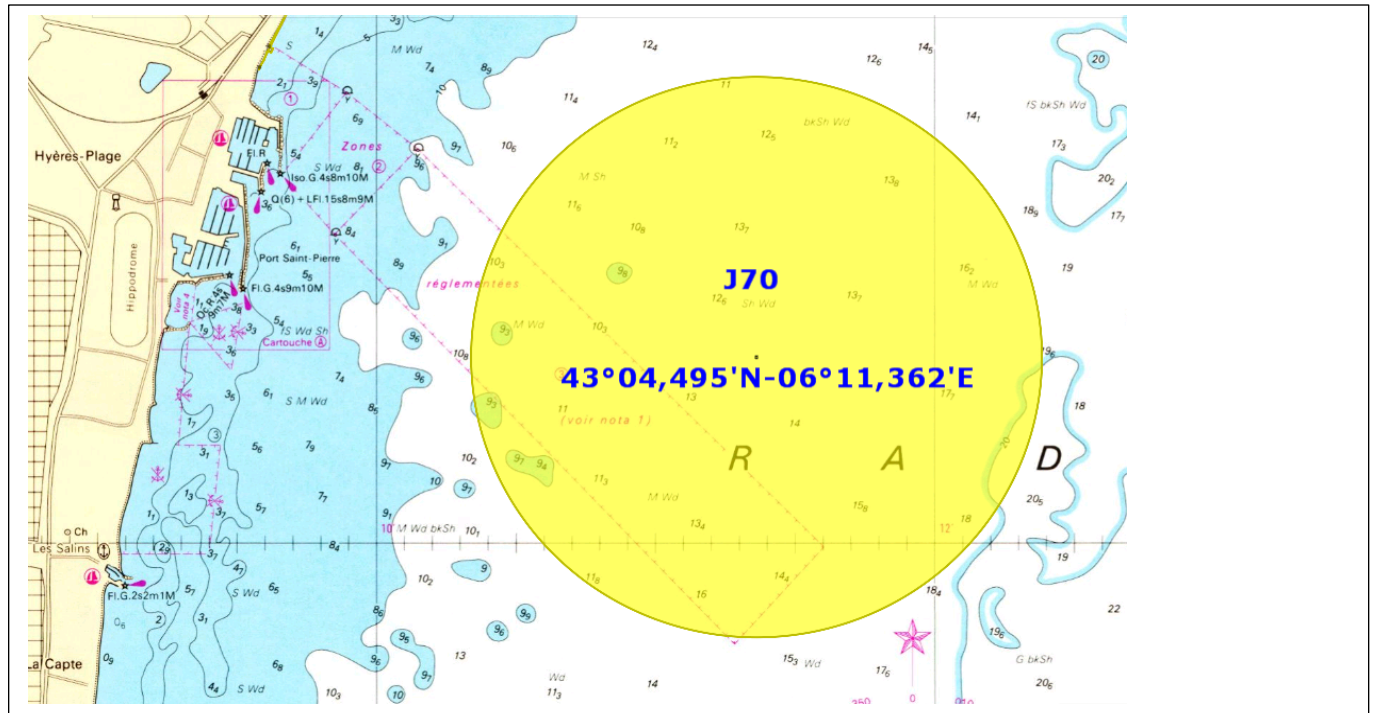
Event Chair: COYCH President (contact@coych.org)
IJ70CA Class Executive: Christopher Howell, CAE (howell@j70office.com)

Principal Race Officer: Nathalie Peberel, IRO
IJ70CA Race Officer: Mark Foster, IRO (mfoster1053@gmail.com)

Jury Chairman: Diego Yubero

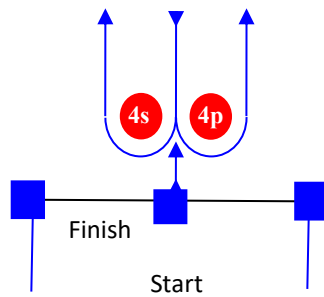
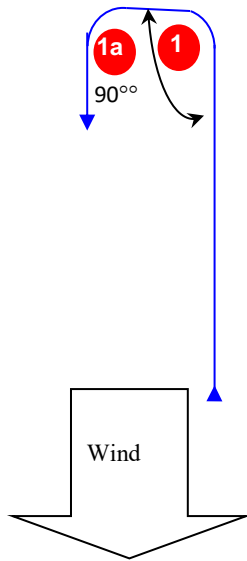
Event Technical Committee Chair: Thomas Lösch, IM (Mobile/WhatsApp: +49 163 877 5400)
IJ70CA Technical Chair: Polk Wagner, IM (polk@polkwagner.com)

ATTACHMENT A RACING AREA



ATTACHMENT B

Course Illustration



Course 4

Signal	Mark Rounding Order
4	Start – 1 – 1a – 4s/4p – 1 – 1a – Finish

ATTACHMENT C

RRS APPENDIX P, Special Procedures for Rule 42 is replaced in its entirety with:

P1 OBSERVERS AND PROCEDURE

A member of the International Jury, protest committee, or its designated observer (collectively, the “observer”) who sees a boat breaking RRS 42 (Propulsion), RRS 49 (Crew Position; Lifelines), J/70 Class Rule (J70CR) C3.3 (Crew Positioning) or J70CR C9.4(b)(1) (Bowsprit Use) may penalize her by, as soon as reasonably possible, making a sound signal, pointing a yellow or red flag at her and hailing her bow or sail number, even if she is no longer *racing*. A boat so penalized shall not be penalized a second time under rule 42 for the same incident.

P2 PENALTIES

When a boat is penalized under rule P1, her penalty shall be a One-Turn Penalty under RRS 44.2. If she fails to take it, she shall be disqualified without a hearing. If an observer signals a penalty after a boat has finished, her penalty shall be a ten percent (10%) scoring penalty calculated per RRS 44.3(c).

P3 POSTPONEMENT OR GENERAL RECALL

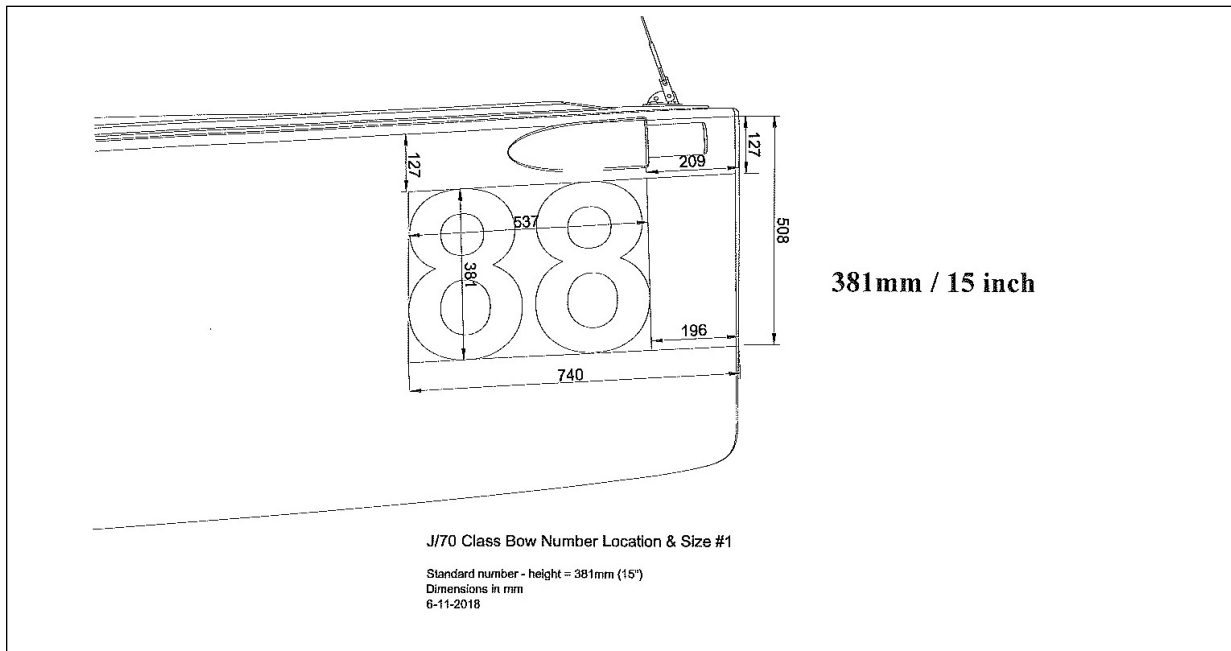
If a boat has been penalized under rule P1 and the race committee signals a postponement or general recall, the penalty is cancelled.

P4 REDRESS LIMITATION

A boat shall not be given redress for an action by an observer under rule P1 unless the action was improper due to a failure to take into account a race committee signal or a class rule.

ATTACHMENT D

J/70 EQUIPMENT REGULATIONS Appendix A: Bow Number Positioning



ATTACHMENT E

Official Regatta *WhatsApp* Group

